



P.O. BOX 388 • ELKINS, WV 26241 • OFFICE: (304) 636-1824 • WWW.FORESTFESTIVAL.COM

**2025 87th Mountain State Forest Festival
Grand Feature Parade and Jack Basil Band Spectacular Entry Form**

Please Note: All information provided will be used for broadcast during the parade and for the Jack Basil Band Spectacular.

Full Name of School	
Band Name	
Band Nickname/Mascot (if applicable)	
School Colors	
Address	
City and State	
Director's Work Phone Number	
Director's Cell Number (contact on day of)	
Director's Email	
Assistant Directors (if applicable)	
Name of Drum Major(s)	
Name of Feature Twirler (if applicable)	
Electricity Needed for Field	
Parking Pass for Equipment Trailer Needed	
Interest in pickup at end of parade	
Number of Paid Staff (for admission)	
Number of Pit Crew (for admission)	
Number of Band Students (1 chaperone admission for each 10 students)	

Please list recent awards your band has received and special performances your band has participated in:



Please indicate the songs you will play during the parade:

Title of Show

Name of songs to be played in Spectacular

My Band is applying for (check one)

☐ Both Parade and Spectacular ☐ Parade Only ☐ Spectacular Only

RELEASE

By signing this form, I release the Mountain State Forest Festival from all personal property damage that may occur because of my participation in the Mountain State Forest Festival.

Director's Signature _____ Date _____





P.O. BOX 388 • ELKINS, WV 26241 • OFFICE: (304) 636-1824 • WWW.FORESTFESTIVAL.COM

**2025 87th Mountain State Forest Festival
Grand Feature Parade and Jack Basil Band Spectacular
Saturday, October 4, 2025**

GENERAL INFORMATION

Parade Registration & Line Up: 10:00 am – 12:30 pm

Parade Step-Off: 1:30 pm

Spectacular Gates Open: 3:30 pm

Spectacular Start: 5:00 pm

The Mountain State Forest Festival is happy to announce the move to a band spectacular format this year. In recognition of the expense to travel, a stipend of \$400 will be offered to the initial twelve marching bands to register for both the Grand Feature Parade and Jack Basil Band Spectacular. Additionally, at the end of the Spectacular, bands who participate in both events will be entered into a random drawing for an additional \$400 travel stipend. In order to be eligible for the stipends, bands must perform in both the Grand Feature Parade and the Jack Basil Band Spectacular. More than twelve bands may register for the events, and the initial twelve registrations will be determined by time stamp submitted on the Mountain State Forest Festival website. The random drawing of \$400 for bands who participate in both events is not limited to the initial twelve registrants.

The Mountain State Forest Festival will work with each marching band to accommodate logistical needs as much as possible. Please stay in touch upon registration so we can make the day enjoyable for your students and support team. Additionally, we will offer a hospitality room for band directors at Elkins High School.



GRAND FEATURE PARADE INFORMATION AND RULES

Registration opens at 10:00 am

Registration/Bus Parking: Wimer Field, S. Davis Ave, Elkins, WV

Band Parade Line-up: Taylor Ave, Elkins, WV

1. To be officially included in the published parade line-up, all groups must have submitted registration by September 19, 2025, to the MSFF website at www.forestfestival.com. The Honor Band for the next year will be chosen by the people's choice vote which takes place during the parade.
2. The Grand Feature Parade starts promptly at **1:30 pm**. You must be registered by **12:00 pm**. Registration will be in or near the "Orange Building" at Wimer Field.
3. Bands will lineup on **Taylor Avenue** in parade order (available at day of registration). All bands need to be in their staging area by 12:30 pm. "Taps" is recommended while proceeding to this area and to the parade route as drum cadences tend to add confusion.
4. Units not in place and ready when their division moves will be placed at the end of the parade.
5. Bands performing in the Spectacular will be strategically placed in the parade to allow for adequate time to prepare for the show.
6. Bands are requested to play at the live stream location which will be communicated to the band director at line-up.
7. We will have designated parking spaces for each band around or near Wimer Field for band drop off. You will again have the option to send buses to pick up at the end of the parade route so that students do not have to walk the distance back to Wimer Field. Please help students load buses as efficiently and expediently as possible because parking is limited. The post-parade pickup will be coordinated closer to the event depending on the demand for this option. Please note: buses picking up at the end of the parade will have to be off the parade route drop-off parking by 12:00 pm and staged at another location due to parade operations.
8. Children under twelve (12) years of age will not be permitted to march.
9. Up to five boosters or managers may march with the band, and should be dressed appropriately according to the home county board of education dress code.
10. Spacing Guidelines:
 - A distance of no greater than 50 feet must be maintained between each entry. Within an entry, the interval between units may be no more than ten (10) feet. Example: Color guard is to be no more than ten (10) feet in front of the drum major; the drum major is to be no more than ten (10) feet in front of the band.
 - No counter marching or any activities that will impede the forward progression of the parade are allowed.
 - Musical groups are alternated with non-musical groups to avoid sound interference.
11. No members of any unit may march or walk back through the line of the parade.
12. Violators of rules, guidelines and instructions are subject to loss of stipend or disqualification. This decision rests solely with the Assistant Director in charge of bands. Directors of disqualified groups will be notified following the parade and a letter of explanation will be sent to the appropriate school principal. Only **directors** of the disqualified groups may address questions regarding the disqualification to the Assistant Director in charge of bands.



JACK BASIL BAND SPECTACULAR INFORMATION AND RULES

Where: Elkins High School Tiger Stadium, 100 Kennedy Dr. Elkins, WV

When: Admission gates open 3:30 pm; Show start 5:00 pm

1. To be officially included in the published Spectacular program, all groups must have submitted registration by September 19, 2025, to the MSFF website at www.forestfestival.com. Note: the online application will go live June 2025.
2. The Jack Basil Band Spectacular is held at Elkins High School, 100 Kennedy Dr. Elkins, WV. Buses must enter the Elkins High School campus from Country Club Road, which is the first right hand exit from the Beverly 5-Lane **after** the main Elkins High School entrance. Buses may proceed to EHS any time after their band has completed the Grand Feature Parade. Parking areas for each band will be assigned after September 19, 2025. Maps for bus parking are included below.
3. The Spectacular is scheduled in a single performance format beginning at 5:00 pm. Each band will have 15 minutes allotted on the field which will begin counting when the band is announced.
4. Do not begin performance until the band has been introduced and the field commander has saluted to indicate the beginning of performance. The band will move to its starting position as the preceding band leaves the field (performance area). As the new band enters the performance area, they will be announced.
5. One room in the press box will be available for one person per band to record their own performance. Please prepare the individual recording to enter/exit with respect to the other bands. Electricity is not available from the press box.
6. There will be two warm-up areas near the field to allow for a 30-minute warm-up.
7. A complimentary room in Elkins High School, with refreshments for band directors and assistant directors, will be provided by the Elkins Area Band Auxiliary.
8. All registered bands will have the opportunity on the registration form to declare their number of paid band staff members and “pit crew” helpers. Bands will receive complimentary admission for staff/crew within reason. Additionally, for every ten total students, the band will receive one complimentary admission for chaperone use. If this amount of complimentary admission is not enough due to county policy, please contact Sarah Wamsley or Derek Wetsch to make arrangements.
9. A golf cart or four-wheeler that is in safe, mechanically sound condition (not leaking fluids, etc.) to assist with equipment transport on/off the track may be used. Additionally, “pit crew” members may help move equipment. Please indicate on the application how many crew members will need complimentary admission.
10. Bands are required to provide their own “pit crew” and method of transportation of pit equipment. We always suggest a band representative be with equipment, as the Mountain State Forest Festival will not be held liable for lost, stolen or damaged equipment.



11. Equipment trailers will be parked with the band buses for logistical ease. Please indicate on the application if you will have a trailer so they may receive a parking pass. Parent vehicles are not allowed to be parked with buses/equipment trailers.
12. Bands will have access to electricity on the field. Please indicate on the registration form if you will need electricity.
13. No pyrotechnical, incendiary, or equipment with open flames may be used at show.
14. Questions concerning rules, policies and/or procedures should be directed to the Committee Chair Sarah Wamsley or Mountain State Forest Festival Assistant Director Derek Wetsch.
15. Violators of rules, guidelines and instructions are subject to loss of stipend or disqualification. This decision rests solely with the Assistant Director in charge of bands. Directors of disqualified groups will be notified following the parade and a letter of explanation will be sent to the appropriate school principal. Only **directors** of the disqualified groups may address questions regarding the disqualification to the Assistant Director in charge of bands.

Contacts:

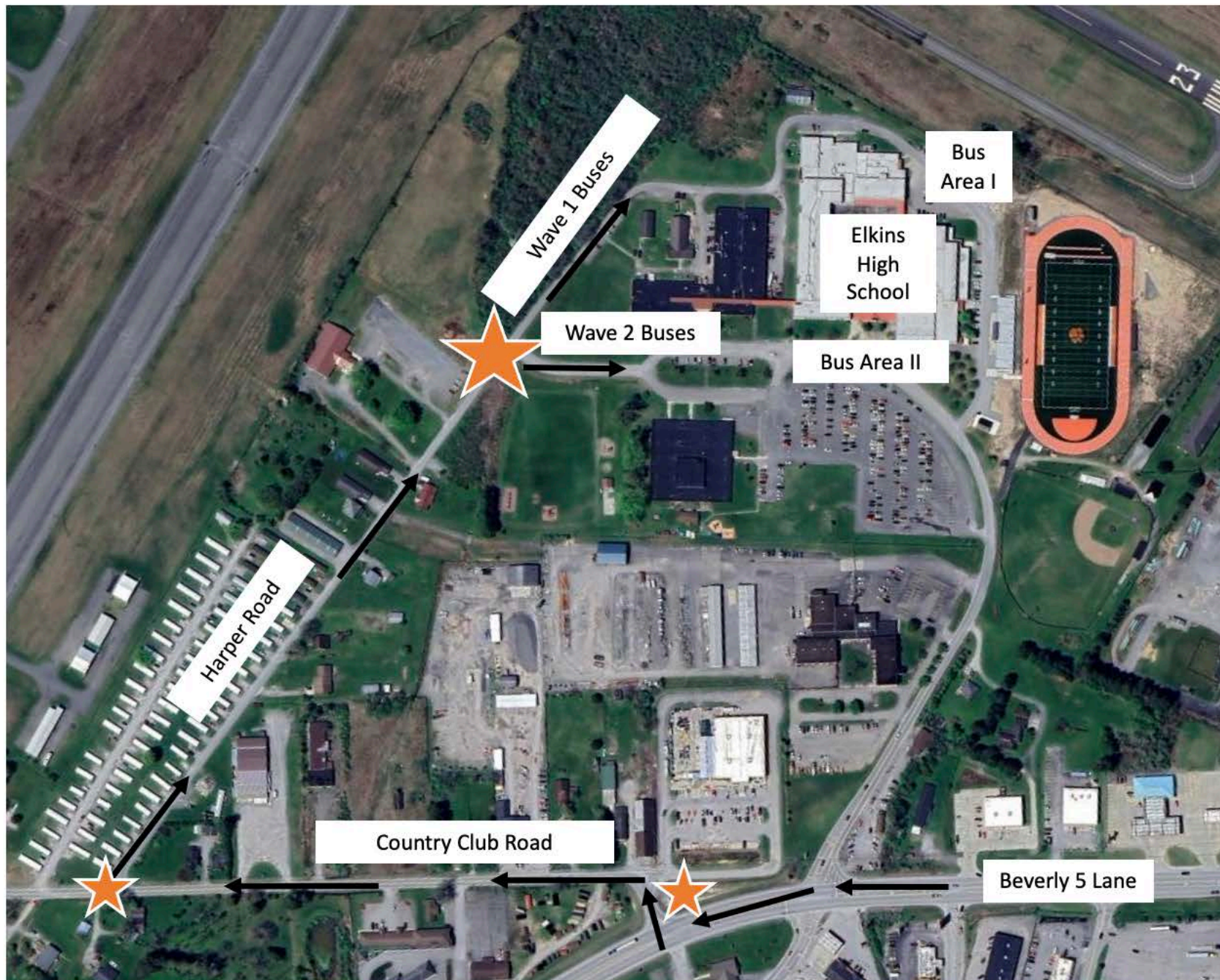
Derek.wetsch@gmail.com; cell (304) 614-2752
Derek Wetsch, Mountain State Forest Festival Assistant Director

sgwamsley@k12.wv.us
Sarah Wamsley, Band Spectacular Committee Chair

seth.blake@k12.wv.us
Seth Blake, Elkins High School Director of Bands

We hope you enjoy the 2025 87th Mountain State Forest Festival!





For Bus Parking

From Beverly 5 Lane turn RIGHT on to Country Club Road if traveling from downtown Elkins

Turn RIGHT on to Harper Road (by Aero Trailer Court)

Turn RIGHT on to Kennedy Drive (side entrance)

- *Bus Area I (includes 1st wave of parade buses) - behind Elkins High School, cafeteria gravel lot*
- *Bus Area II (wave 2 of buses) – in front of Elkins High School*

A MSFF Volunteer will be available to direct you to Bus Area I or II

For Spectator Parking

From Beverly 5 Lane turn RIGHT on to Kennedy Drive